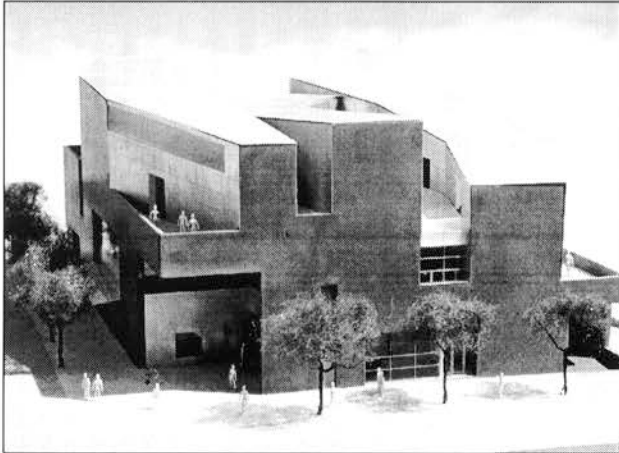


DAILY JOURNAL OF COMMERCE

Thursday, November 16, 2000



...gentle yet tough and willful form-making



HONOR AWARD: BELLEVUE ART MUSEUM, Steven Holl Architects, Sclater Partners, associate architect; Guy Nordenson and Associates, structural (schematic design); Skilling Ward Magnusson Barkshire, structural. General contractor: Sellen Construction.

This building looks better completed than it does in the models and drawings. It offers wonderful surprises of form. Its gentle yet tough and willful form-making promises not to compete with the work we will see within this frame. In spite of its vigorous geometry, it comes off restrained and gentle – and despite its strength it doesn't suffer from "shape-it is," with a resoundingly successful resonance of program and form.

Photography by Steven Holl Architects

...ingenious use of off-the-shelf pieces



AWARD OF MERIT: RODDY-BALE RESIDENCE (Bellevue); The Miller|Hull Partnership; CT Engineering, structural; SvR Design Co., civil. General contractor: Jerry Fulks.

Extremely appealing, a great place to do some potting! We admired the ingenious use of off-the-shelf pieces, and the subtle suggestion of Asian influences.

Photography by Fred Housel

2000 Honor Awards

continued from previous page

Editor James S. Russell moderating. The theme chosen for the program – "Outside In" – reflects the current dialog, both within the design professions and among public officials, private clients, and the public, about the impact of high-visibility projects on the urban fabric and the cultural life of the region.

Honor Awards went to Steven Holl Architects for the Bellevue Art Museum; to James Cutler Architects for Pine Forest Cabin in Winthrop; and to Olson Sundberg Kundig Allen Architects for The Brain: A Filmmaker's Studio in Seattle.

Recognized with Merit Awards were Good Samaritan Hospital, Dr. Donald & Beret Mott Children's Center in Puyallup, designed by the Zimmer Gunsul Frasca Partnership; Gosline Residence in Seattle by Bohlin Cywinski Jackson; and Roddy-Bale Residence in Bellevue by The Miller/Hull Partnership.

Commendations went to BjarkoSerra Architects for the First Christian Reformed Church Additions & Alterations in Shoreline; the Northwest Architectural Company for the House of Charity in Spokane; Mahlum Architects for the Polson Building/Mahlum Architects Offices in Seattle; NBBJ for Reebok World Headquarters in Canton, Mass.; Bumgardner for Saffron, a mixed-use development in Sammamish;

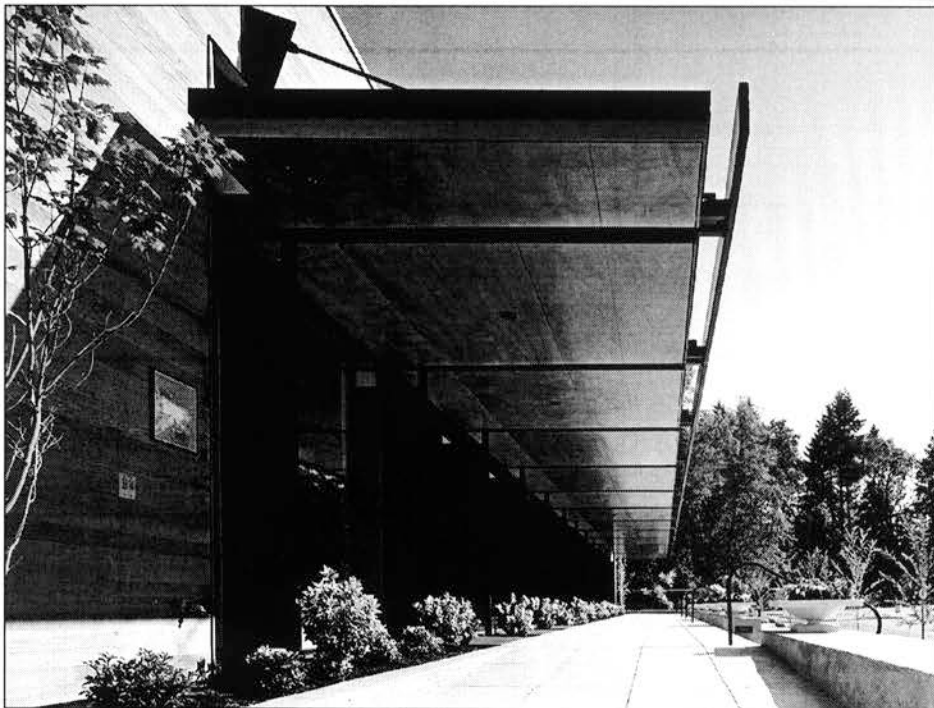
and Bohlin Cywinski Jackson for the Turtle Bay Exploration Park Visitor Center in Redding, Calif.

The design for the Seattle Central Public Library by OMA in partnership with LMN, was recognized by the jury with a Merit Award in the "Not Yet Built" category. In the same category, the jury awarded a Commendation to LMN Architects for Reno-Sparks Convention Center Addition & Renovation.

In a separate program held Nov. 6, a jury comprised of Bainbridge Island architect James Cutler, Architecture-Week Editor in Chief Kevin Matthews, landscape architect Barbara Swift, Swift & Company, and moderator Richard Mohler selected "transPIER," by CAST design build, to receive citation in the Conceptual program.

AIA Seattle this year conducted the nation's first-ever online Honor Awards program, receiving and publishing all entries online. The AIA Seattle Website drew more than 100,000 hits in the 10-day period following posting of the entries, at www.aiaseattle.org/2000awards. Future postings and publications will illustrate cited projects and all entries of current work. Entries in the Conceptual category remain on view at AIA Seattle Gallery through the month of November.

...comfort, beauty, and ease of congregation within



COMMENDATION: FIRST CHRISTIAN REFORMED CHURCH ADDITION & ALTERATIONS (Shoreline), BjarkoSerra Architects; DCI, Inc., structural; Interface Engineering, mechanical/electrical; Atelier, landscape; CTS Engineers, Inc., civil. General contractor: Merit Company

This form demonstrates "volumetric success," a long thin geometry vs. a clean peaked triangle – severe and simple, artfully contrasted with comfort, beauty, and ease of congregation within. We had the pleasure of seeing it filled with people, doing its job as a place of community.

Photography by Fred Housel, Chris Serra